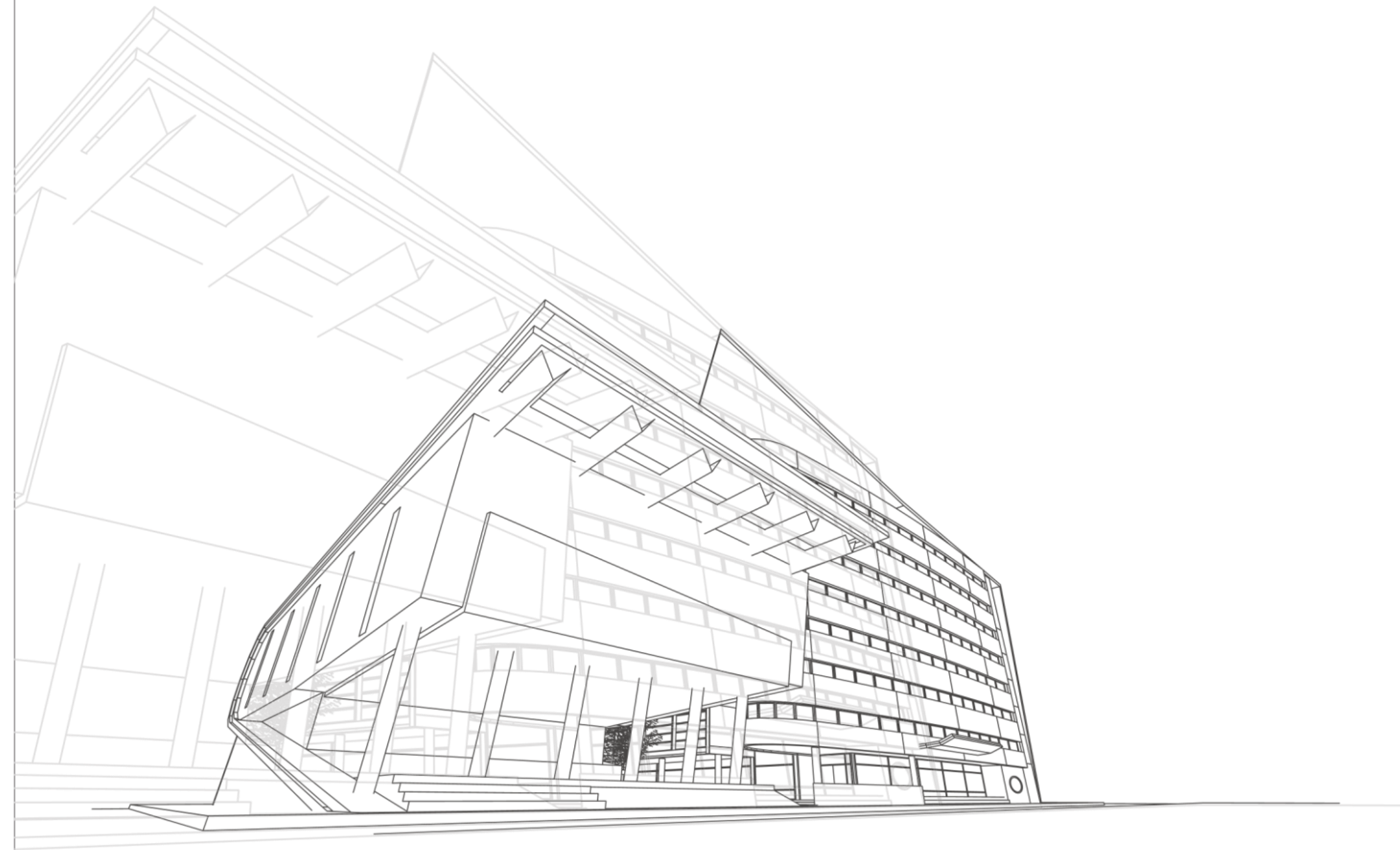


**INMAC**  
ARCHITECTURAL CEILING



**Exterior Duct Cladding | Metal False Ceiling | Exterior Sun Louvers**

## ABOUT US

---

IMAC architectural ceiling is a specialist in the supply & installation of Metal False Ceiling, Exterior Cladding & Exterior Louvers.

We carry out customized false ceiling designing projects according to the specification and requirement of client. Which is highly reliable, durable and cost effective.

We offer unmatched quality products and services and won the trust and good relations among our esteemed clients.

IMAC provides Galvanized Steel or Aluminium Materials on client's demand.

## MISSION



Our mission is to provide quality products and services to our customers Ensure profitability and promote employee development.

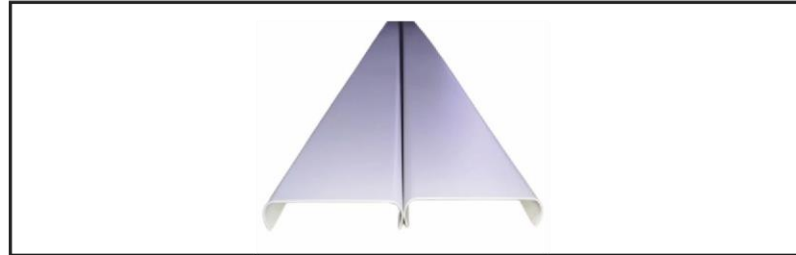
## EXPERTISE

Architects, Builders, & Designers persistently try to transform ideas and co-ordinate it with project.

We respect every designer, architect's ideas and concepts with inovative asthetic to work.

We design a graceful work with respect to the budget and standard of project design.

# CONTENTS



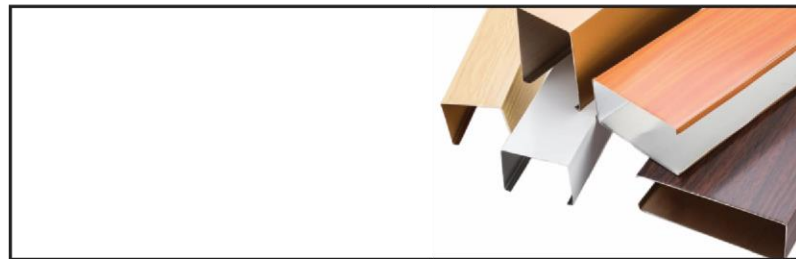
Linear Ceiling  
60R | 84R | 84RF | 184R

.....01



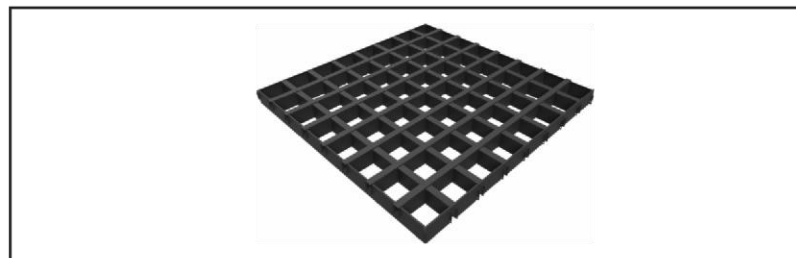
Linear Ceiling  
60C | 84C | 128C | 184C

.....02



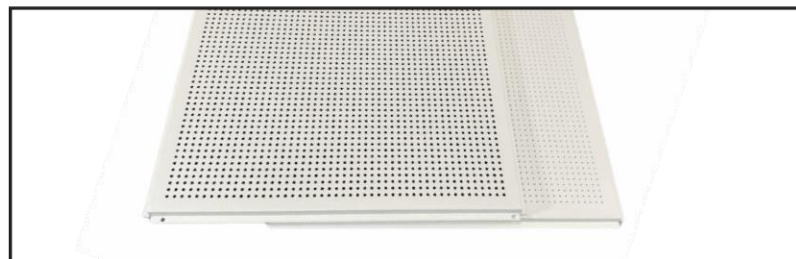
U Shape Baffle Ceiling

.....03



Open Cell Ceiling  
75 | 100 | 150 | 200 Module

.....04



Lay In Tile Ceiling

.....05

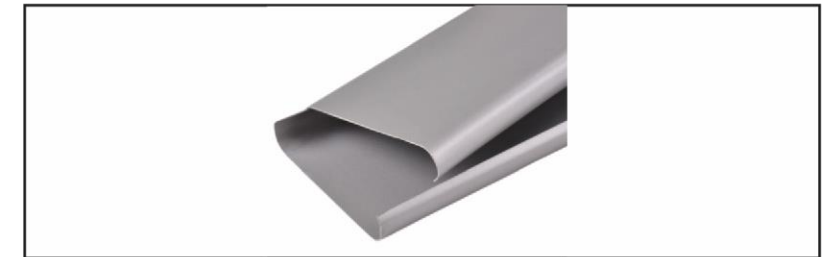
Clip In Tile Ceiling

06.....



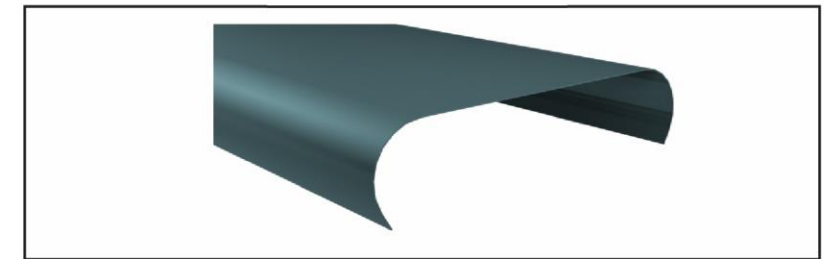
Sun Louvers  
84R H-3 | SL-4 | SL-5

07.....



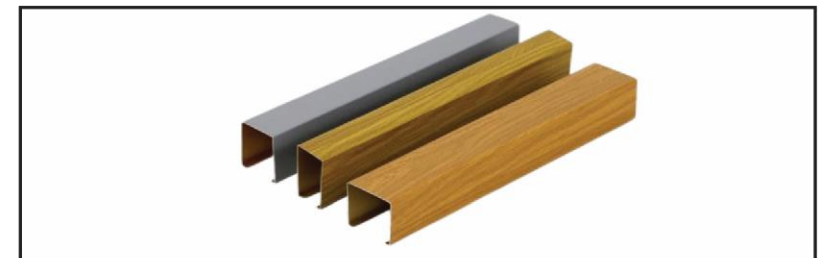
Exterior Cladding  
38R | 60R | 84R

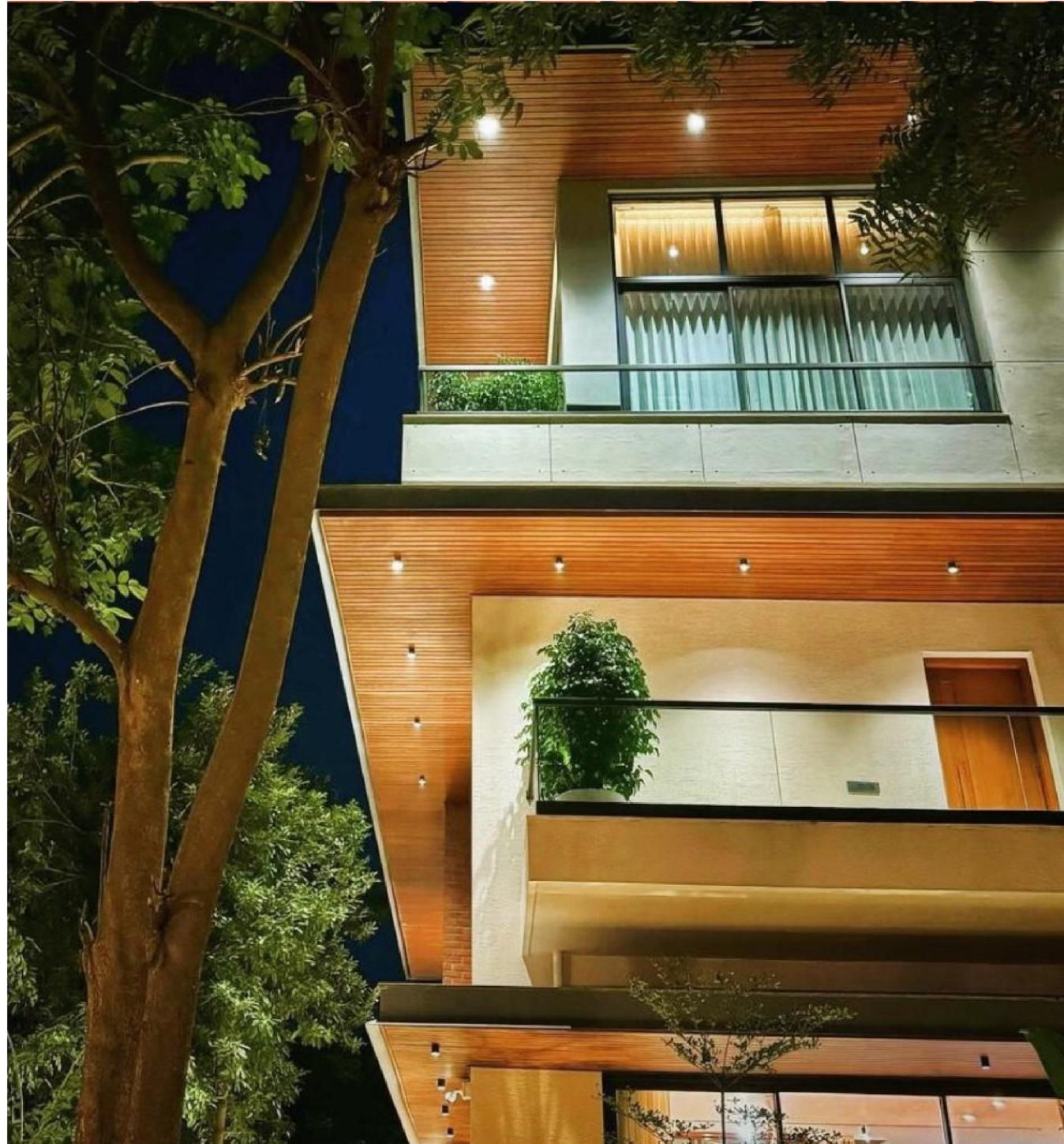
08.....



U Shaped Baffle Louvers

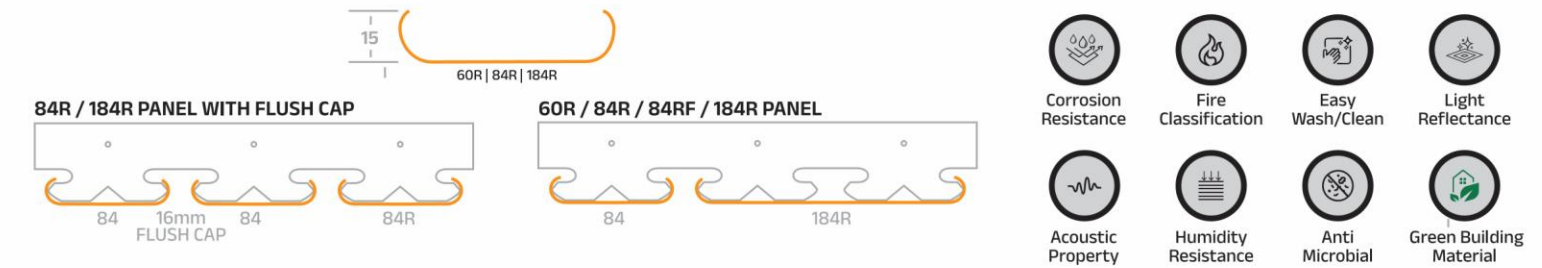
09.....





## Linear 60C | 84C | 128C | 184C

84R false ceiling is a linear ceiling with round edge panel. The panels are 60mm, 84mm, 184mm in width and can have lengths up to 5000mm. In the linear system, when we install its looks 84mm in width along with a 16mm gap so panel in width covers a total of 100mm space.



### Material:

Galvanized Steel 0.50mm, Aluminium 0.65mm

### Panels:

Square edge, 84mm wide, 15mm deep, length up to 5mtr

### Carrier:

Carrier shall be 20 mm wide and 40 mm deep of 0.60mm Galvanized Steel stove enameled black to hold Panel in module of 100 mm.

### Paint Finish:

55 microns thick powder coating on exposed surface or 25 microns polyester coil coated over primer on visible surface with primer coat on rear side.

S i

fi

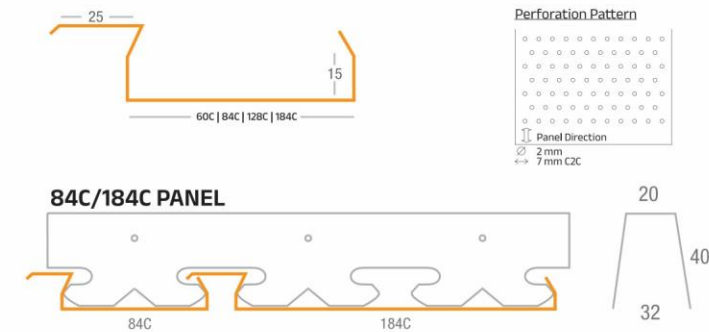


## Linear Multi Panel 60C | 128C

Linear ceilings, generally with groove breaks the plain look like flooring and individual slits (panels) are removable for maintenance, looks even better in colour combination.

The panel has two section, one comprising of with 60mm and other comprising of width of panel 128mm, The first section when we install of width 60mm used of beautiful look along with a big section.

We put 8mm, 16mm and 20mm groove between panels to gives aesthetic look to the ceiling.



### Material:

Galvanized Steel 0.50mm, Aluminium 0.65mm

### Panels:

Square edge, 84mm wide, 15mm deep, length up to 5mtr

### Carrier:

Carrier shall be 20 mm wide and 40 mm deep of 0.60mm Galvanized Steel stove enameled black to hold Panel in module of 100 mm.

### Paint Finish:

55 microns thick powder coating on exposed surface or 25 microns polyester coil coated over primer on visible surface with primer coat on rear side.

S i

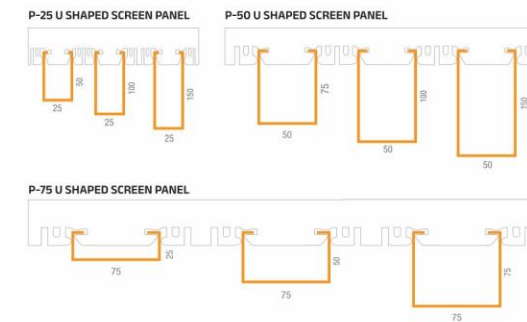
fi



## U Shape Baffle Ceiling

U Shape Baffle Ceiling provides an effective one directional visual screen in a range of modular sizes to suit the application giving effective close look though it is an open ceiling.

U Shape curtain is highly used in building elevation aesthetics & design patterns in continuity make this screen cladding a favourite for architects and builders.



### Material:

Galvanized Steel 0.50mm & Aluminium 0.65mm

### Panels:

P50 Panel-50mm/150mm/125mm wide, & P25 Panel - 25mm / 75mm / 100mm, 50mm / 100mm deep, length up to 3 mtr. Galvanized Steel 0.50mm/0.45mm & 0.65mm Aluminum.

### Carrier:

Various Gap, 25mm / 50mm / 75mm / 100mm made of Galvanized Steel 0.60mm thick stove enameled black.

### Paint Finish:

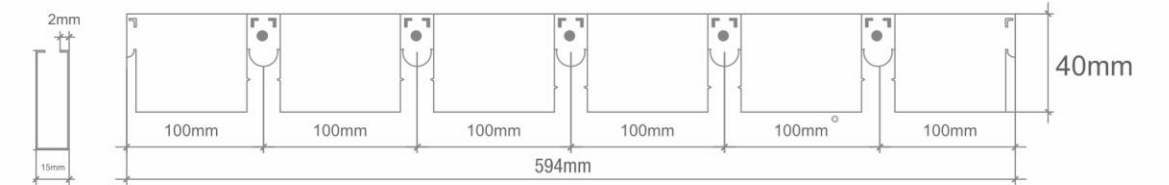
55 microns thick powder coating on exposed surface or 25 microns polyester coil coated over primer on visible surface with primer coat on rear side.



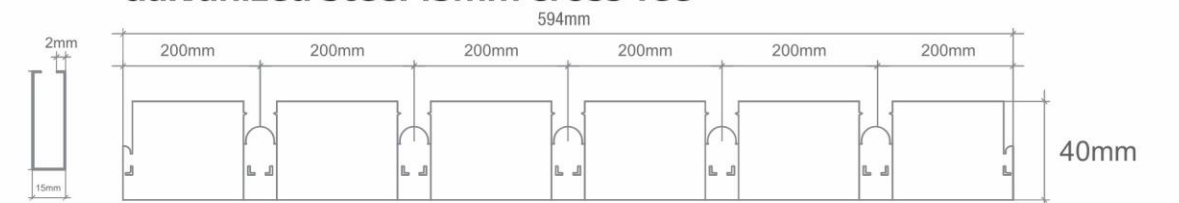
## Open Cell Ceiling 75 | 100 | 150 | 200 Module

An open Cell Ceiling is a simple Lay In Ceiling with a different type of tile in size 595mm X 595mm. This tile called an Open Cell Tile and is prepared on an inter locking strip system.

### Galvanized Steel 15mm Main Tee



### Galvanized Steel 15mm Cross Tee



Corrosion  
Resistance



Fire  
Classification



Easy  
Wash/Clean



Light  
Reflectance



Acoustic  
Property



Humidity  
Resistance



Anti  
Microbia



Green Building  
Material



## Lay In Tile

Lay In Tile system is based on visible structure frame with some specific size of tile. In this system we prepare a frame with the help of a tee grid system which gets fully visible from the bottom. We prepare the frame box size according to the Lay In Tile size.

Lay In Tile are available in a variety of a rectangular and square sizes like, 575mmx575mm, 585mmx585mm, 575mmx1175mm.



### Material:

Galvanized Steel 0.50mm & Aluminium 0.65mm

### Panels:

Square/ Beveled Edge 575\*575mm, 585\*585mm 575\*1175mm & Customized.

### Paint Finish:

55 microns thick powder coating on exposed surface or 25 microns polyester coil coated over primer on visible surface with primer coat on rear side.

### Suspension:

Spring Steel Butterfly Clip, 4mm dia GS Rod, Edge Profile & Recommended "T" grid System.



## Clip In Tile

The clip In Tile is an invisible structure ceiling, in which we use clip in tiles of different sizes along with clip in profile.

Clip In Tile are available in a variety of rectangular and square sizes like, 600mmx600mm, 600mmx1200mm, 300mmx1200mm & custom sizes.

**Isometric View**

**Possible Lay-Outs**

Combined Tile Sizes    Straight Joints    Staggered Joints

**Clip-In Panel**

**Edge Details**

W Profile    L Profile

600

**Material:**  
Galvanized Steel 0.50mm & Aluminium 0.65mm / 0.71mm

**Panels:**  
For Flush & Concealed Look, Square/ Beveled Edge tile of 600\*600mm / 1200\*300mm & Customized

**Paint Finish:**  
55 microns thick powder coating on exposed surface or 25 microns polyester coil coated over primer on visible surface with primer coat on rear side.

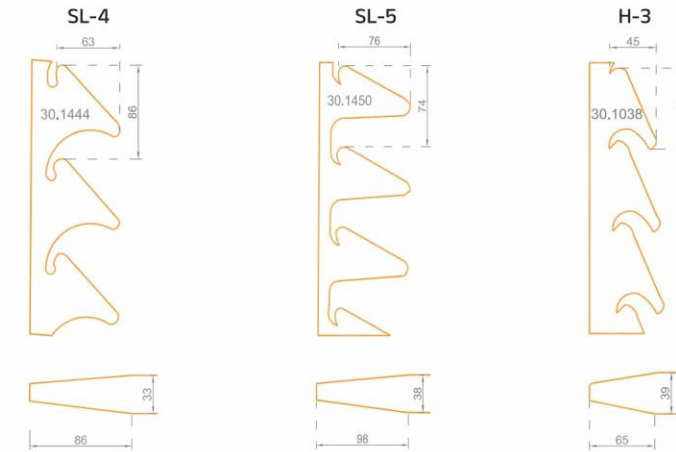
**Suspension:**  
GS Clip in Carrier, GS Clip in Carrier Coupler, GS Hold on Hanger, Pressure Clip, 4mm dia GS Rod, Height Adjustment Spring Steel Small Clip, Edge Profile.

# SUN LOUVERS



## 84R H-3 | SL-4 | SL-5

The Installation of a Sun Louvers in an effective and simple way to protect a building and its occupants against direct solar radiation.



### Material:

84mm wide, 15mm deep, length up to 5 mtr. made of Galvanized Steel 0.50mm & 0.65mm Aluminum-TCT.

### Carrier:

Various dimensions (SL-4 / SL-5/H-3) made of Galvanized Steel 0.60mm, Aluminum 0.91mm thick stove enameled/coil coated black.

### Paint Finish:

55 microns thick powder coating on exposed surface or 25 microns polyester coil coated over primer on visible surface with primer coat on rear side.

### Suspension:

L Clit, Stud, Corrosion & Weather resistive screws and other components if required for structure.



## 38R | 60R | 84R

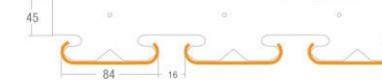
Linear R series with their round edges these panels are easy to set up and take off.

Their effect is simple but pleasant. Linear Exterior Cladding can be fixed horizontally or vertically with multi space cladding system.

60R Panel Details



84R Panel Details (V2-62mm) (V5-16mm) (V6-32mm) GAP



Corrosion Resistance



Fire Classification



Easy Wash/Clean



Light Reflectance



Acoustic Property



Humidity Resistance



Anti Microbial



Green Building Material

### Panels Detail (Galvanized Steel):

Round edge panels, 15mm deep x length up to 5mtr. formed out of 0.50mm Galvanized Steel

### Panels Detail (Aluminum):

Round edge panels, 84mm width x 15mm deep x length up to 5mtr. formed out of 0.71mm Aluminum alloy (AA)

### Carrier:

16mm, 25mm, 35mm, 50mm Gap in Carrier

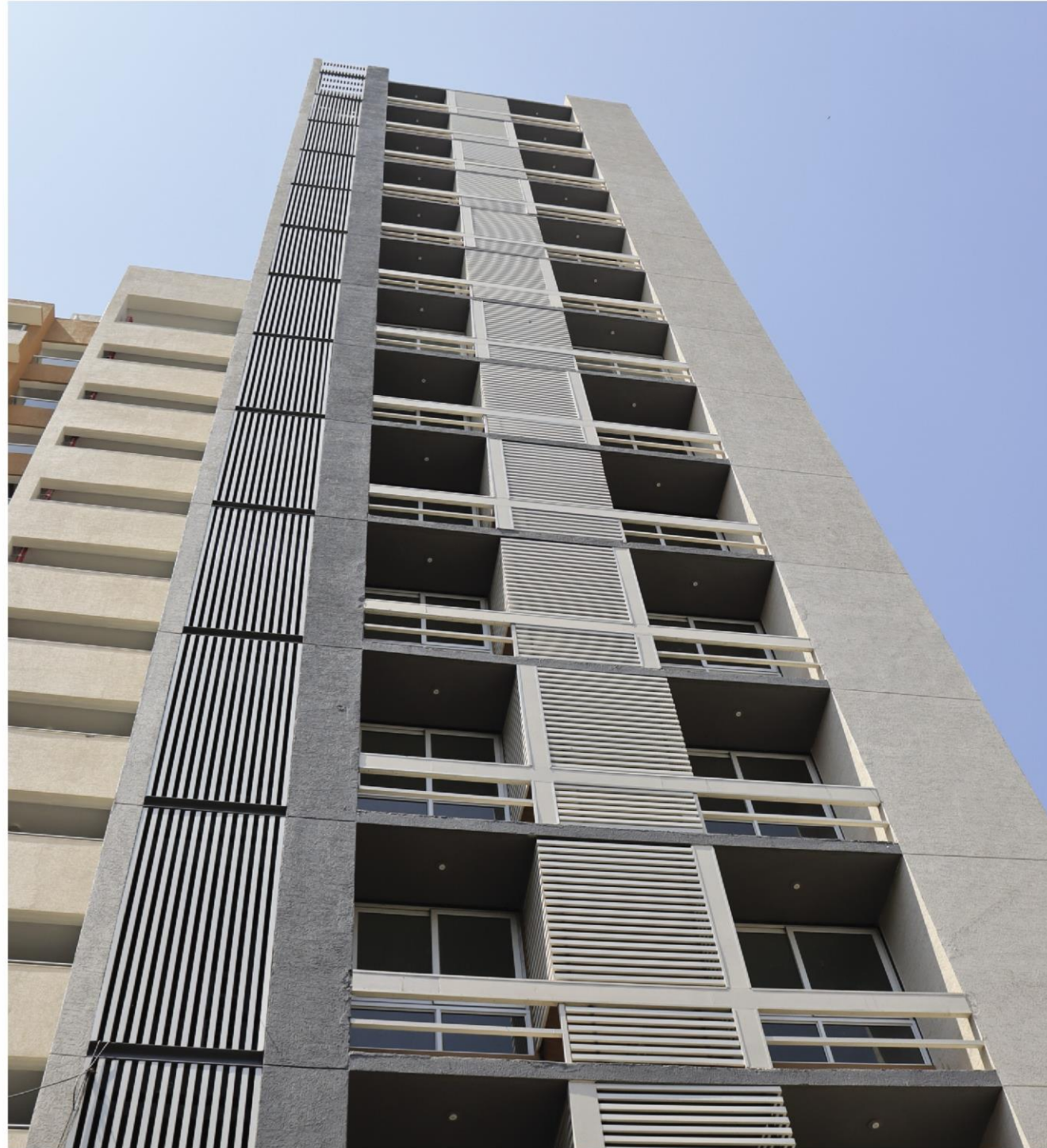
16mm, 27mm, 35mm, 50mm Gap in Carrier

### Paint Finish:

55 microns thick powder coating on exposed surface or 25 microns polyester coil coated over primer on visible surface with primer coat on rear side.

### Suspension:

L Clit, Stud, Corrosion & Weather resistive screws and other components if required for structure.



## U Shaped Baffle Louvers

U Shaped Baffle Box Louvers are an easily mounted and extremely versatile exterior cladding system. U Shaped Box is an economic but long lasting solution for external cladding. Special unique powder coating finish on panel is not affected by dirt and humidity.

U Shaped Panels available in wood metallic and texture finish.

25mmx25mmx25mm | 25mmx50mmx25mm | 25mmx75mmx25mm | 50mmx25mmx50mm | 50mmx50mmx50mm (Carriers are available in multiple of 25mm Gap)

**U SHAPE BAFFLE P-25  
(VARIABLE GAP) CLADDING**



**U SHAPE BAFFLE P-75  
(VARIABLE GAP) CLADDING**



**U SHAPE BAFFLE P-50 (VARIABLE GAP) CLADDING**



Corrosion  
Resistance



Fire  
Classification



Easy  
Wash/Clean



Light  
Reflectance



Acoustic  
Property



Humidity  
Resistance



Anti  
Microbial



Green Building  
Material

### Panels Detail :

P50 Panel-50mm/150mm/125mm wide, & P25 Panel - 25mm / 75mm / 100mm, 50mm / 100mm deep, length up to 3 mtr.  
Galvanized Steel 0.50mm/0.45mm & 0.65mm Aluminum.

### Carrier:

Various gap, 25mm / 50mm / 75mm / 100mm made of Galvanized Steel 0.60mm thick stove enameled black.

### Paint Finish:

55 microns thick powder coating on exposed surface or 25 microns polyester coil coated over primer on visible surface with primer coat on rear side.

### Suspension:

L Clit, Stud, Corrosion & Weather resistive screws and other components if required for structure.



## IMAC Architectural Ceiling

☎ [+91 83474 74424](tel:+918347474424)

📍 211, Ravija Plaza, Beside Times Square Arcade, Thaltej - Shilaj Rd, Thaltej, Ahmedabad, Gujarat-380059.

✉ [info@imacarchitecturalceiling.com](mailto:info@imacarchitecturalceiling.com)

🌐 [www.imacarchitecturalceiling.com](http://www.imacarchitecturalceiling.com)